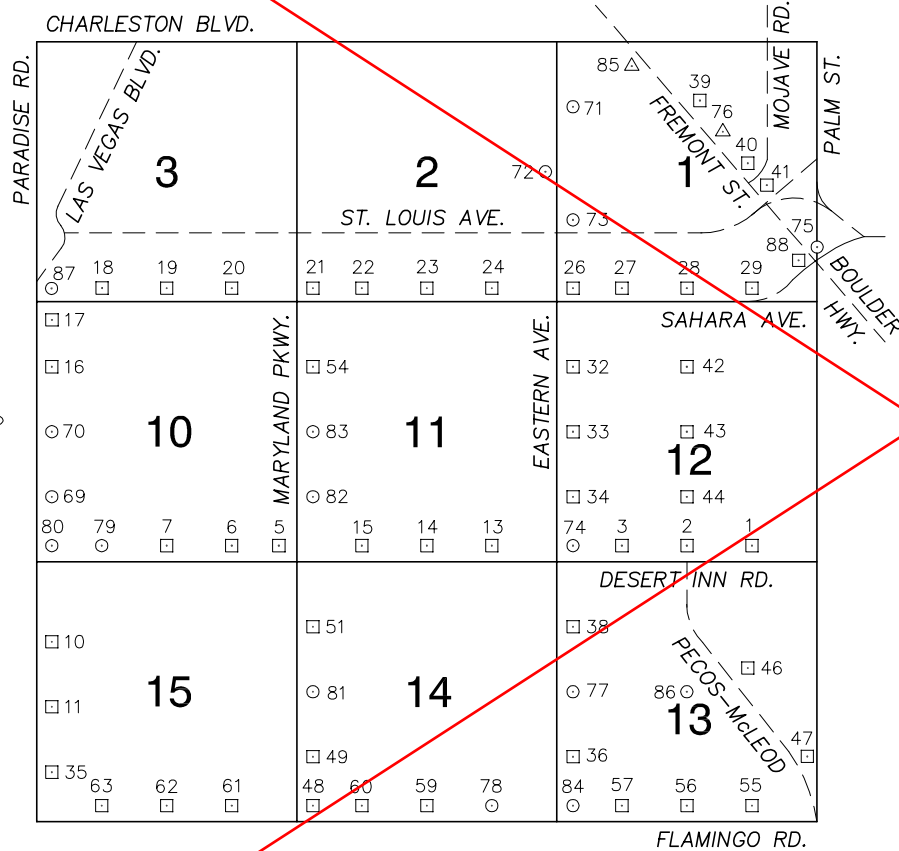


FOR REFERENCE ONLY

*2018 BENCHMARK NETWORK ADJUSTMENT SUPERSEDES THE 2003 BENCHMARK BOOK

Township 21 South, Range 61 East
Northeast Quarter



NORTH AMERICAN VERTICAL
DATUM OF 1988
- ALL ELEVATIONS IN METERS -

No.	STATION	ELEVATION (METERS)	DESCRIPTION
1	6C11 12SSE6	569.314	F N D 2" DOME HEAD BRASS CAP REFERENCE MONUMENT IN TOP OF CURB, NORTHEAST CORNER OF DESERT INN RD. AND MOJAVE RD. NEAR THE PC OF DESERT INN RD. STAMPED "67.60 RLS 5835".
2	6C11 12S4	573.488	F N D 2" DOME HEAD BRASS CAP REFERENCE MONUMENT IN TOP OF CURB, NORTHEAST CORNER OF DESERT INN RD. AND PECOS-McCLEOD INTERCONNECT. NEAR THE PC OF DESERT INN RD. STAMPED "88.71 RLS 5835".
3	6C11 12SSW6	577.127	F N D 2" DOME HEAD BRASS CAP REFERENCE MONUMENT IN TOP OF CURB, NORTHEAST CORNER OF DESERT INN RD. AND TOPAZ ST. NEAR PC OF DESERT INN RD. STAMPED "71.11 RLS 5835".
4			LOST 2003
5	6C11 10SES	607.117	F N D 2" DOME HEAD BRASS CAP REFERENCE MONUMENT IN TOP OF CURB, NORTHWEST CORNER OF DESERT INN RD. AND MARYLAND PKWY. NEAR 1/2 DELTA.
6	6C11 10SSE6	612.338	F N D 2" DOME HEAD BRASS CAP REFERENCE MONUMENT IN TOP OF CURB, IN THE NORTHEAST CORNER OF DESERT INN RD. AND CAMBRIDGE ST. JUST WEST OF THE WEST DRIVEWAY GOING INTO 1020 DESERT INN RD.
7	6C11 10S4	616.856	F N D 2" DOME HEAD BRASS CAP REFERENCE MONUMENT IN TOP OF CURB, NORTHEAST CORNER OF DESERT INN RD. AND JOE W. BROWN DR.-SWENSON ST. NEAR THE PC OF DESERT INN ROAD.
8			LOST 2003
9			LOST 2003
10	6C11 15NWW6	624.423	F N D RIVET AND SQUARE ALUMINUM PLATE IN TOP OF CURB, NORTHEAST CORNER OF PARADISE RD. AND EDISON CIR. NEAR THE PC OF PARADISE RD.
11	6C11 15W4	625.212	F N D RIVET AND SQUARE ALUMINUM PLATE IN TOP OF CURB, NORTHEAST CORNER OF PARADISE RD. AND SANDS AVE.-TWIN AVE, NEAR THE PC OF PARADISE RD.

CLARK COUNTY VERTICAL CONTROL v.2003

CLARK COUNTY SURVEYOR'S OFFICE
5051 SOUTH PARADISE ROAD
LAS VEGAS, NEVADA 89119
(702) 455-0640

CONVERSION FACTOR:
METERS X $\left(\frac{3937}{1200}\right)$ = U.S. SURVEY FEET

REVISED 2003 SHEET 1 OF 5 21-61 NE

FOR REFERENCE ONLY

***2018 BENCHMARK NETWORK ADJUSTMENT SUPERSEDES THE 2003 BENCHMARK BOOK**

No.	STATION	ELEVATION (METERS)	DESCRIPTION	No.	STATION	ELEVATION (METERS)	DESCRIPTION		
12			LOST 2003	25			LOST 2003		
13	6C11 11SSE6	588.248	F N D 2" DOME HEAD BRASS CAP REFERENCE MONUMENT, IN TOP OF CURB, NORTHEAST CORNER OF DESERT INN RD. AND BURNHAM AVE. NEAR THE PC OF DESERT INN RD.	26	6C11 1SWS	575.221	F N D RIVET AND SQUARE ALUMINUM PLATE IN TOP OF CURB, NORTHEAST CORNER OF SAHARA AVE. AND EASTERN AVE. NEAR THE PC OF SAHARA AVE.		
14	6C11 11S4	592.074	F N D 2" DOME HEAD BRASS CAP REFERENCE MONUMENT, IN TOP OF CURB, NORTHEAST CORNER OF DESERT INN RD. AND PAWNEE DR. NEAR THE PC OF DESERT INN RD.	27	6C11 1SSW6	569.223	F N D RIVET AND SQUARE ALUMINUM PLATE IN TOP OF CURB, NORTHEAST CORNER OF SAHARA AVE. AND ATLANTIC ST. NEAR THE PC OF SAHARA AVE.		
15	6C11 11SSW6	598.471	F N D 2" DOME HEAD BRASS CAP REFERENCE MONUMENT, IN TOP OF CURB, NORTHEAST CORNER OF DESERT INN RD. AND LA CANADA ST. NEAR THE PC OF DESERT INN RD.	28	6C11 1S4	564.893	F N D RIVET AND SQUARE ALUMINUM PLATE IN TOP OF CURB, NORTHEAST CORNER OF SAHARA AVE. AND McLEOD DR. NEAR THE PC OF SAHARA AVE.		
16	6C11 10NWW6	621.159	F N D RIVET AND SQUARE ALUMINUM PLATE IN TOP OF CURB, NORTHEAST CORNER OF PARADISE RD. AND KAREN AVE. NEAR THE PC OF PARADISE RD.	29	6C11 1SSE6	560.059	F N D RIVET AND SQUARE ALUMINUM PLATE IN TOP OF CURB, NORTHWEST CORNER OF SAHARA AVE. AND CHEVY PLACE-MOJAVE RD. NEAR THE PC OF SAHARA AVE.		
17	6C11 10NWS	620.312	F N D NDOT BRASS CAP IN TOP OF CURB, SOUTHEAST CORNER OF SAHARA AVE. AND PARADISE RD. NEAR THE PC OF SAHARA AVE. STAMPED "STA C-160+40.00 POT DIST. 61.01, ANGLE 90".	30			LOST 2003		
18	CLV 1613 C2	618.238	F N D CITY OF LAS VEGAS PIN AND PLATE IN TOP OF CURB, NORTHEAST CORNER OF SAHARA AVE. AND SANTA ROSA DR. NEAR THE PC OF SAHARA AVE, STAMPED "1613 C2".	31			LOST 2003		
19	6C11 3S4	616.448	F N D RIVET AND SQUARE ALUMINUM PLATE IN TOP OF CURB, NORTHEAST CORNER OF SAHARA AVE. AND 6TH ST. NEAR THE PC OF OF SAHARA AVE.	32	6C11 12NWW6	577.685	F N D RIVET AND SQUARE ALUMINUM PLATE IN TOP OF CURB, NORTHEAST CORNER EASTERN AVE. AND KAREN AVE. NEAR THE PC OF EASTERN AVE.		
20	6C11 3SSE6	613.720	F N D RIVET AND SQUARE ALUMINUM PLATE IN TOP OF CURB, NORTHEAST CORNER OF SAHARA AVE. AND COMMERCIAL CENTER DR. BY THE EAST SIGNAL CONTROL BOX.	33	6C11 12W4	582.440	F N D RIVET AND SQUARE ALUMINUM PLATE IN TOP OF CURB, NORTHEAST CORNER OF EASTERN AVE. AND VEGAS VALLEY DR. NEAR THE PC OF EASTERN AVE.		
21	6C11 2SWS	609.563	F N D RIVET AND SQUARE ALUMINUM PLATE IN TOP OF CURB, NORTHEAST CORNER SAHARA AVE. AND MARYLAND PKWY. NEAR THE PC OF SAHARA AVE.	34	6C11 12SWW6	585.442	F N D RIVET AND SQUARE ALUMINUM PLATE IN TOP OF CURB, NORTHEAST CORNER OF EASTERN AVE. AND GOLDEN ARROW DR. NEAR THE PC OF EASTERN AVE.		
22	6C11 2SSW6	603.387	F N D RIVET AND SQUARE ALUMINUM PLATE IN TOP OF CURB, NORTHEAST CORNER OF SAHARA AVE. AND 15TH ST. NEAR THE PC OF SAHARA AVE.	35	6C11 15SWW6	625.233	F N D RIVET AND SQUARE ALUMINUM PLATE IN TOP OF CURB, NORTHEAST CORNER OF PARADISE RD. AND DRIVEWAY GOING INTO 3900 PARADISE RD. NEAR PC OF PARADISE RD. 1/4 MILE SOUTH OF SANDS AVE.-TWIN AVE.		
23	6C11 2S4	590.952	F N D RIVET AND SQUARE ALUMINUM PLATE IN TOP OF CURB, NORTHEAST CORNER OF SAHARA AVE. AND SPENCER ST. NEAR THE PC OF SAHARA AVE.	CLARK COUNTY VERTICAL CONTROL v.2003					
24	6C11 2SSE6	581.815	F N D RIVET AND SQUARE ALUMINUM PLATE IN TOP OF CURB, NORTHEAST CORNER OF SAHARA AVE. AND BURNHAM AVE. NEAR THE PC OF SAHARA AVE.	CLARK COUNTY SURVEYOR'S OFFICE 5051 SOUTH PARADISE ROAD LAS VEGAS, NEVADA 89119 (702) 455-0640			CONVERSION FACTOR: METERS X $\left(\frac{3937}{1200}\right)$ = U.S. SURVEY FEET		
							REVISED 2003	SHEET 2 OF 5	21-61 NE

FOR REFERENCE ONLY

***2018 BENCHMARK NETWORK ADJUSTMENT SUPERSEDES THE 2003 BENCHMARK BOOK**

No.	STATION	ELEVATION (METERS)	DESCRIPTION	No.	STATION	ELEVATION (METERS)	DESCRIPTION
36	6C11 13SWW6	589.096	F N D RIVET AND SQUARE ALUMINUM PLATE IN TOP OF CURB, NORTHEAST CORNER OF EASTERN AVE. AND VIKING RD. NEAR THE PC OF EASTERN AVE.	49	6C11 14SWW6	606.194	F N D RIVET AND SQUARE ALUMINUM PLATE IN TOP OF CURB, EAST SIDE OF MARYLAND PKWY. ON THE NORTH SIDE OF FLAMINGO WASH.
37			LOST 2003	50			LOST 2003
38	6C11 13NWW6	586.873	F N D RIVET AND SQUARE ALUMINUM PLATE IN TOP OF CURB, NORTHEAST CORNER OF EASTERN AVE. AND EMERSON AVE. NEAR THE PC OF EASTERN AVE.	51	6C11 14NWW6	605.938	F N D RIVET AND SQUARE ALUMINUM PLATE IN TOP OF CURB, NORTHEAST CORNER OF MARYLAND PKWY. AND SIERRA VISTA DR. NEAR THE PC OF MARYLAND PKWY.
39	6C11 1N6	565.049	F N D RIVET AND SQUARE ALUMINUM PLATE IN TOP OF CURB, EAST SIDE OF FREMONT ST. AND NORTH OF OLIVE ST. ACROSS THE STREET FROM THE CASTAWAYS HOTEL.	52			LOST 2003
40	6C11 1C4	561.986	F N D RIVET AND SQUARE ALUMINUM PLATE IN TOP OF CURB, EAST SIDE OF FREMONT ST. AT PROJECTED CENTERLINE OF OAKY BLVD. BETWEEN 3045 & 3025 FREMONT ST. JUST SOUTH OF CAT BUS STOP # 7136.	53			LOST 2003
41	6C11 1E6	558.964	F N D RIVET AND SQUARE ALUMINUM PLATE IN TOP OF CURB, SOUTHEAST CORNER OF FREMONT ST. AND MOJAVE RD. NEAR 1/2 DELTA.	54	6C11 11NWW6	612.288	F N D RIVET AND SQUARE ALUMINUM PLATE IN TOP OF CURB, NORTHEAST CORNER MARYLAND PKWY AND KAREN AVE. NEAR THE PC OF MARYLAND PKWY.
42	6C11 12N6	569.678	F N D RIVET AND SQUARE ALUMINUM PLATE IN TOP OF CURB, SOUTHEAST CORNER OF McLEOD DR. AND KAREN AVE. NEAR THE PC OF McLEOD DR.	55	7C11 13SSE6	582.089	F N D RIVET AND SQUARE ALUMINUM PLATE IN TOP OF CURB, NORTHEAST CORNER OF FLAMINGO RD. AND MOJAVE RD. NEAR THE PC OF FLAMINGO RD.
43	6C11 12C4	569.329	F N D RIVET AND SQUARE ALUMINUM PLATE IN TOP OF CURB, NORTHEAST CORNER OF McLEOD DR. AND VEGAS VALLEY DR. NEAR THE PC OF McLEOD DR.	56	7C11 13S4	582.987	F N D RIVET AND SQUARE ALUMINUM PLATE IN TOP OF CURB, NORTHEAST CORNER OF FLAMINGO RD. AND McLEOD DR. NEAR THE PC OF FLAMINGO RD.
44	6C11 12S6	571.171	F N D RIVET AND SQUARE ALUMINUM PLATE IN TOP OF CURB, NORTHEAST CORNER OF McLEOD DR. AND PALORA AVE. NEAR THE PC OF McLEOD DR.	57	7C11 13SSW6	589.395	F N D RIVET AND SQUARE ALUMINUM PLATE IN TOP OF CURB, NORTHEAST CORNER FLAMINGO RD. AND TOPAZ RD. NEAR THE PC OF OF FLAMINGO RD.
45			LOST 2003	58			LOST 2003
46	6C11 13E6	578.454	F N D RIVET AND SQUARE ALUMINUM PLATE IN TOP OF CURB, NORTHEAST CORNER OF TWAIN AVE. AND PECOS-McCLOUD INTERCONNECT NEAR THE PC OF PECOS-McCLEOD INTERCONNECT.	59	7C11 14S4	598.865	F N D RIVET AND SQUARE ALUMINUM PLATE IN TOP OF CURB, NORTHEAST CORNER OF FLAMINGO RD. AND SPENCER ST. NEAR THE PC OF FLAMINGO RD.
47	6C11 13SEE6	574.503	F N D RIVET AND SQUARE ALUMINUM PLATE IN TOP OF CURB, NORTHEAST CORNER OF VIKING RD. AND PECOS-McCLEOD INTERCONNECT NEAR THE PC OF PECOS-McCLEOD INTERCONNECT.	CLARK COUNTY VERTICAL CONTROL v.2003			
48	6C11 14SWS	610.410	F N D RIVET AND SQUARE ALUMINUM PLATE IN TOP OF CURB, NORTHEAST CORNER OF MARYLAND PKWY. AND FLAMINGO RD. NEAR 1/2 DELTA.	CLARK COUNTY SURVEYOR'S OFFICE 5051 SOUTH PARADISE ROAD LAS VEGAS, NEVADA 89119 (702) 455-0640			CONVERSION FACTOR: METERS X $\left(\frac{3937}{1200}\right)$ = U.S. SURVEY FEET
				REVISED 2003	SHEET 3 OF 5	21-61 NE	

FOR REFERENCE ONLY

***2018 BENCHMARK NETWORK ADJUSTMENT SUPERSEDES THE 2003 BENCHMARK BOOK**

No.	STATION	ELEVATION (METERS)	DESCRIPTION	No.	STATION	ELEVATION (METERS)	DESCRIPTION
60	7C11 14SSW6	604.305	F N D RIVET AND SQUARE ALUMINUM PLATE IN TOP OF CURB, NORTHEAST CORNER OF FLAMINGO RD. AND TAMARUS ST.-ALGONQUIN DR. NEAR PC OF FLAMINGO RD.	73	2LV11 01SWW6	574.543	F N D CITY OF LAS VEGAS PIN AND PLATE IN TOP OF CURB, NORTHEAST CORNER OF EASTERN AVE. AND ST. LOUIS AVE. NEAR THE PC OF EASTERN AVE.
61	7C11 15SSE6	615.438	F N D RIVET AND SQUARE ALUMINUM PLATE IN TOP OF CURB, NORTHEAST CORNER OF FLAMINGO RD. AND CAMBRIDGE ST. NEAR THE PC OF FLAMINGO RD.	74	8C11 12SWS 1998	584.471	S E T RIVET AND ROUND ALUMINUM PLATE IN TOP OF CURB, NORTHEAST CORNER OF EASTERN AVE. AND DESERT INN RD. NEAR THE PC OF EASTERN AVE.
62	7C11 15S4	618.803	F N D RIVET AND SQUARE ALUMINUM PLATE IN TOP OF CURB, NORTHEAST CORNER OF FLAMINGO RD. AND SWENSON ST. NEAR THE PC OF FLAMINGO RD.	75	7C11 1SES 1997	555.957	S E T RIVET AND ROUND ALUMINUM PLATE IN TOP OF CURB, NORTHEAST CORNER OF SAHARA AVE. AND FREMONT ST. NEAR PC OF SAHARA AVE.
63	7C11 15SSW6	622.602	F N D RIVET AND SQUARE ALUMINUM PLATE IN TOP OF CURB, NORTHEAST CORNER OF FLAMINGO RD. AND PALOS VERDE ST. NEAR THE PC OF FLAMINGO RD.	76	BOULEVARD 2 AZI. NO. 3 1977	562.983	F N D 4" NGS BRASS CAP IN TOP OF CURB ON EAST SIDE OF FREMONT ST. AT 2965 FREMONT ST.
64			LOST 2003	77	8C11 13W4 1998	584.619	S E T RIVET AND ROUND ALUMINUM PLATE IN TOP OF CURB, NORTHEAST CORNER OF EASTERN AVE. AND TWAIN AVE. NEAR THE PC OF EASTERN AVE.
65			LOST 2003	78	8C11 14SSE6 1998	596.609	S E T RIVET AND ROUND ALUMINUM PLATE IN TOP OF CURB, NORTHWEST CORNER OF FLAMINGO RD. AND BURNHAM AVE. NEAR THE PC OF FLAMINGO RD.
66			LOST 2003	79	0C11 10SSW6 2000	612.724	S E T RIVET AND ROUND ALUMINUM PLATE IN TOP OF CURB, NORTH SIDE OF DESERT INN RD. 0.25 MILES WEST OF JOE W. BROWN DR.
67			LOST 2003	80	0C11 10SWS 2000	622.920	S E T RIVET AND ROUND ALUMINUM PLATE IN TOP OF CURB, NORTHEAST CORNER OF DESERT INN RD. AND PARADISE RD. NEAR THE PC OF PARADISE RD.
68			LOST 2003	81	0C11 14W4 2000	607.113	S E T RIVET AND ROUND ALUMINUM PLATE IN TOP OF CURB, NORTHEAST CORNER OF MARYLAND PKWY. AND TWAIN AVE. NEAR THE PC OF MARYLAND PKWY.
69	0C11 10SWW6 2000	622.787	S E T RIVET AND ROUND ALUMINUM PLATE IN TOP OF CURB, NORTHEAST CORNER OF PARADISE RD. AND CONVENTION CENTER DR. NEAR THE PC OF PARADISE RD.	82	0C11 11SWW6 2000	610.465	S E T RIVET AND ROUND ALUMINUM PLATE IN TOP OF CURB, NORTHEAST CORNER OF MARYLAND PKWY. AND SUNRISE HOSPITAL DR. NEAR THE PC OF MARYLAND PKWY.
70	0C11 10W4 2000	622.098	S E T RIVET AND ROUND ALUMINUM PLATE IN TOP OF CURB, NORTHEAST CORNER OF PARADISE RD. AND RIVIERA BLVD. NEAR THE PC OF PARADISE RD.	83	0C11 11W4 2000	610.250	S E T RIVET AND ROUND ALUMINUM PLATE IN TOP OF CURB, NORTHEAST CORNER OF MARYLAND PKWY. AND VEGAS VALLEY DR. NEAR THE PC OF MARYLAND PKWY.
71	2LV11 01NWW6	571.316	F N D RIVET AND ROUND ALUMINUM PLATE IN TOP OF CURB, SOUTHEAST CORNER OF EASTERN AVE. AND FRANKLIN AVE. NEAR THE PC OF EASTERN AVE.	CLARK COUNTY VERTICAL CONTROL v.2003			
72	1LV11 02E4	571.957	F N D RIVET AND ROUND ALUMINUM PLATE IN TOP OF CURB, SOUTHWEST CORNER OF EASTERN AVE. AND OAKLEY BLVD. NEAR 1/3 DELTA OF EASTERN AVE.	CLARK COUNTY SURVEYOR'S OFFICE 5051 SOUTH PARADISE ROAD LAS VEGAS, NEVADA 89119 (702) 455-0640		CONVERSION FACTOR: METERS X $\left(\frac{3937}{1200}\right)$ = U.S. SURVEY FEET	
				REVISED 2003		SHEET 4 OF 5	21-61 NE

FOR REFERENCE ONLY

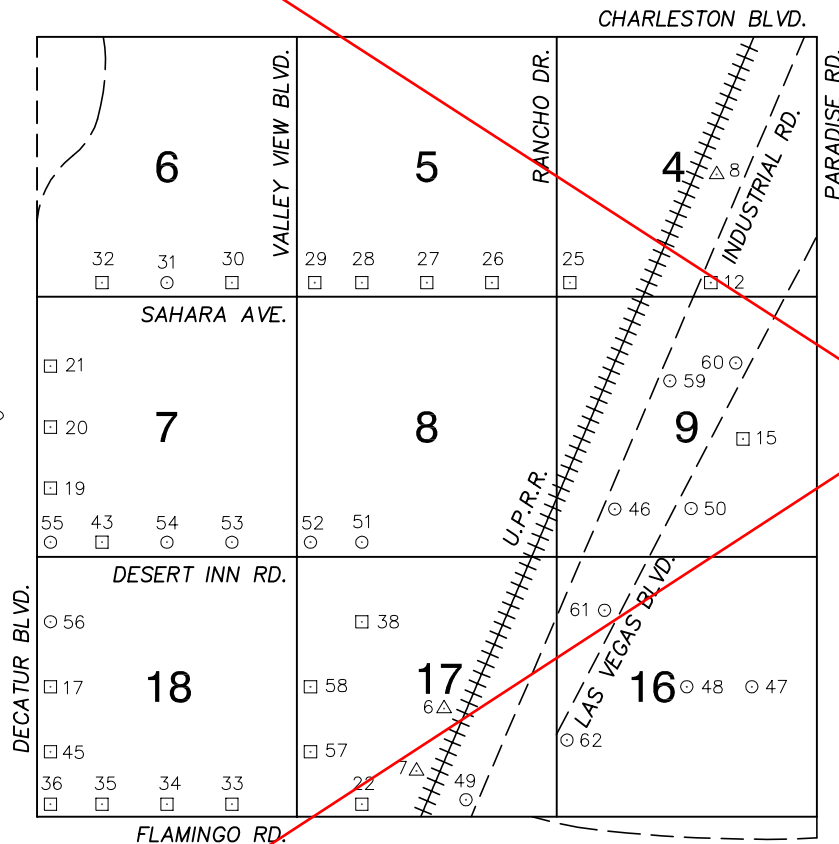
***2018 BENCHMARK NETWORK ADJUSTMENT SUPERSEDES THE 2003 BENCHMARK BOOK**

No.	STATION	ELEVATION (METERS)	DESCRIPTION	No.	STATION	ELEVATION (METERS)	DESCRIPTION
84	8C11 13SWS 1998	594.234	SET RIVET AND ROUND ALUMINUM PLATE IN TOP OF CURB, NORTHEAST CORNER OF EASTERN AVE. AND FLAMINGO RD. NEAR THE PC OF EASTERN AVE..	97			
85	BOULEVARD 2 AZI. NO. 5 1977	567.676	FIND 3 1/2" NGS BRASS CAP IN CONCRETE STEP OF ENTRANCE TO "US MOTEL" AT 2490 FREMONT ST.	98			
86	8C11 13C4 1988	581.080	SET RIVET AND ROUND ALUMINUM PLATE IN TOP OF CURB, NORTHEAST CORNER OF MCLEOD DR. AND TWAIN AVE. NEAR THE PT OF TWAIN AVE.	99			
87	2LV11 3SWS	620.318	SET NDOT BRASS CAP IN TOP OF CURB, NORTHEAST CORNER OF SAHARA AVE. AND PARADISE RD. NEAR THE PC OF SAHARA AVE., STAMPED "2LV11 03SWS STA C-160+40.00".	100			
88	OLV11 1SES	556.259	FIND CITY OF LAS VEGAS PIN AND PLATE IN TOP OF CURB, NORTHWEST CORNER OF SAHARA AVE. AND FREMONT ST. NEAR THE PC OF FREMONT ST.	101			
89				102			
90				103			
91				104			
92				105			
93				106			
94				107			
95				CLARK COUNTY VERTICAL CONTROL v.2003			
96				CLARK COUNTY SURVEYOR'S OFFICE 5051 SOUTH PARADISE ROAD LAS VEGAS, NEVADA 89119 (702) 455-0640		CONVERSION FACTOR: METERS X $\left(\frac{3937}{1200}\right)$ = U.S. SURVEY FEET	
				REVISED 2003	SHEET 5 OF 5	21-61 NE	

FOR REFERENCE ONLY

*2018 BENCHMARK NETWORK ADJUSTMENT SUPERSEDES THE 2003 BENCHMARK BOOK

Township 21 South, Range 61 East
Northwest Quarter



NORTH AMERICAN VERTICAL
DATUM OF 1988
- ALL ELEVATIONS IN METERS -

No.	STATION	ELEVATION (METERS)	DESCRIPTION
1			LOST 2003
2			LOST 2003
3			LOST 2003
4			LOST 2003
5			LOST 2003
6	W 399 1980	648.204	F N D USC&GS BRASS CAP SET VERTICALLY IN EAST FACE OF SOUTH SUPPORT PILLAR OF SOUTH BOUND I-15 OVERPASS AT RAILROAD TRACKS, FIRST COLUMN WEST OF TRACKS.
7	N 366 1963	653.516	F N D USC&GS BRASS CAP IN SOUTHEAST HEADWALL OF RAILROAD BRIDGE, 325' NORTH OF FLAMINGO RD. OVERPASS AT TRACKS.
8	K 366 1963	623.990	F N D USC&GS BRASS CAP IN NORTHEAST CORNER OF OAKY BLVD.-WYOMING AVE. AND U.P.R.R. TRACKS, IN TOP OF WEST END OF RETAINING WALL.
9			LOST 2003
10			LOST 2003
11			LOST 2003

CLARK COUNTY VERTICAL CONTROL v.2003

CLARK COUNTY SURVEYOR'S OFFICE
5051 SOUTH PARADISE ROAD
LAS VEGAS, NEVADA 89119
(702) 455-0640

CONVERSION FACTOR:
METERS X $\left(\frac{3937}{1200}\right)$ = U.S. SURVEY FEET

REVISED 09/01/2006	SHEET 1 OF 4	21-61 NW
-----------------------	-----------------	-------------

FOR REFERENCE ONLY

***2018 BENCHMARK NETWORK ADJUSTMENT SUPERSEDES THE 2003 BENCHMARK BOOK**

No.	STATION	ELEVATION (METERS)	DESCRIPTION	No.	STATION	ELEVATION (METERS)	DESCRIPTION
12	6C11 4S4	626.252	F N RIVET AND SQUARE ALUMINUM PLATE IN TOP OF CURB, D EAST SIDE OF INDUSTRIAL RD. JUST NORTH OF SAHARA AVE. OVERPASS NEAR THE PC OF NORTH BRIDGE ST.	25	7C11 4SWS	632.656	F N RIVET AND SQUARE ALUMINUM PLATE IN TOP OF CURB, D NORTHEAST CORNER OF SAHARA AVE. AND RANCHO DR. NEAR THE PC OF SAHARA AVE.
13			LOST 2003	26	7C11 5SSE6	636.825	F N RIVET AND SQUARE ALUMINUM PLATE IN TOP OF CURB, D NORTHEAST CORNER OF SAHARA AVE. AND PASEO DEL PRADO-TEDDY DR. NEAR THE PC OF SAHARA AVE.
14			LOST 2003	27	7C11 5S4	640.447	F N RIVET AND SQUARE ALUMINUM PLATE IN TOP OF CURB, D NORTHEAST CORNER OF SAHARA AVE. AND RICHFIELD BLVD. NEAR THE PC OF SAHARA AVE.
15	6C11 9E6	627.908	F N RIVET AND SQUARE ALUMINUM PLATE IN A TRAFFIC D SIGNAL POLE BASE, SOUTHEAST CORNER OF RIVIERA BLVD. AND LAS VEGAS BLVD.	28	7C11 5SSW6	649.768	F N RIVET AND SQUARE ALUMINUM PLATE IN TOP OF CURB, D NORTHEAST CORNER OF SAHARA AVE. AND RYE ST. - SPANISH OAKS DR. NEAR THE PC OF SAHARA AVE.
16			LOST 2003	29	7C11 5SWS	657.619	F N RIVET AND SQUARE ALUMINUM PLATE IN TOP OF CURB, D NORTHEAST CORNER OF SAHARA AVE. AND VALLEY VIEW BLVD. NEAR THE PC OF SAHARA AVE.
17	7C11 18W4	676.537	F N RIVET AND SQUARE ALUMINUM PLATE IN TOP OF CURB, D NORTHEAST CORNER OF DECATUR BLVD. AND TWAIN AVE. NEAR THE PC OF DECATUR BLVD.	30	7C11 6SSE6	660.636	F N RIVET AND SQUARE ALUMINUM PLATE IN TOP OF CURB, D NORTHEAST CORNER OF SAHARA AVE. AND ARENAS ST. NEAR THE PC OF SAHARA AVE.
18			LOST 2003	31	7C11 6S4	665.299	F N NDOT BRASS CAP IN TOP OF CURB, NORTHWEST D CORNER OF SAHARA AVE. AND ARVILLE ST. NEAR THE PC OF SAHARA AVE.
19	7C11 7SWW6	674.393	F N RIVET AND SQUARE ALUMINUM PLATE IN TOP OF CURB, D NORTHEAST CORNER OF DECATUR BLVD. AND SIRIUS AVE. NEAR THE PC OF DECATUR BLVD.	32	2LV11 6SSW6	669.693	F N CITY OF LAS VEGAS PIN AND PLATE IN TOP OF CURB, D NORTH SIDE OF SAHARA AVE. AT DECATUR PLAZA, NEAR 4601 SAHARA AVE.
20	CLV 1617B14	676.560	F N CITY OF LAS VEGAS PIN AND PLATE IN TOP OF CURB, D NORTH CORNER OF DECATUR BLVD. AND PENNWOOD AVE. (EDNA AVE. WESTERLY) NEAR THE PC OF DECATUR BLVD.	33	7C11 18SSE6	663.961	F N RIVET AND SQUARE ALUMINUM PLATE IN TOP OF CURB, D NORTHEAST CORNER OF FLAMINGO RD. AND WYNN RD. NEAR THE PC OF FLAMINGO RD.
21	CLV 1617B15	676.138	F N CITY OF LAS VEGAS PIN AND PLATE IN TOP OF CURB, D SOUTHEAST CORNER OF DECATUR BLVD. AND ELDORA AVE. NEAR THE PC OF DECATUR BLVD.	34	7C11 18S4	668.173	F N RIVET AND SQUARE ALUMINUM PLATE IN TOP OF CURB, D NORTHEAST CORNER OF FLAMINGO RD. AND ARVILLE ST. NEAR THE PC OF FLAMINGO RD.
22	7C11 17SSW6	653.350	F N RIVET AND SQUARE ALUMINUM PLATE IN NORTHEAST D CORNER OF CONCRETE FOUNDATION OF DOUBLE POWERLINE AT NORTH POLE #FL 6 AT NORTHEAST CORNER OF FLAMINGO RD. AND HIGHLAND DR.	35	7C11 18SSW6	672.823	F N RIVET AND SQUARE ALUMINUM PLATE IN TOP OF CURB, D NORTHWEST CORNER OF FLAMINGO RD. BETWEEN CAMERON ST. AND CALLE SAN REMO DR. NEAR THE PC OF CAMERON ST.
23			LOST 2003	CLARK COUNTY VERTICAL CONTROL v.2003			
24			LOST 2003	CLARK COUNTY SURVEYOR'S OFFICE 5051 SOUTH PARADISE ROAD LAS VEGAS, NEVADA 89119 (702) 455-0640			CONVERSION FACTOR: METERS X $\left(\frac{3937}{1200}\right)$ = U.S. SURVEY FEET
				REVISED 09/01/2006	SHEET 2 OF 4	21-61 NW	

FOR REFERENCE ONLY

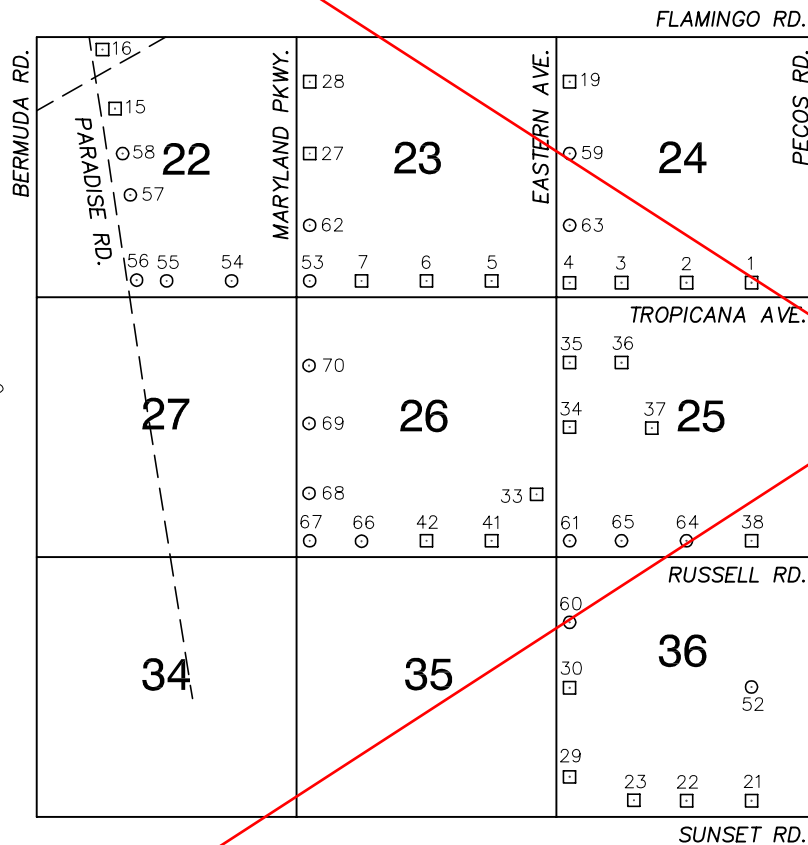
***2018 BENCHMARK NETWORK ADJUSTMENT SUPERSEDES THE 2003 BENCHMARK BOOK**

No.	STATION	ELEVATION (METERS)	DESCRIPTION	No.	STATION	ELEVATION (METERS)	DESCRIPTION
36	7C11 18SWS	678.353	F N D RIVET AND SQUARE ALUMINUM PLATE IN TOP OF CURB, NORTHEAST CORNER OF FLAMINGO RD. AND DECATUR BLVD. NEAR THE PC OF FLAMINGO RD.	49	0C11 17S4 2000	651.611	S E T RIVET AND ROUND ALUMINUM PLATE IN TOP OF CURB, WEST SIDE OF INDUSTRIAL RD. 100' NORTH OF THE FLAMINGO RD. OVERPASS.
37			LOST 2003	50	0C11 9S6 2000	630.998	S E T RIVET AND ROUND ALUMINUM PLATE IN TOP OF CURB, NORTHEAST CORNER OF CATHEDRAL WAY AND LAS VEGAS BLVD. NEAR THE PC OF CATHEDRAL WAY.
38	7C11 17NW6	651.332	F N D RIVET AND SQUARE ALUMINUM PLATE IN TOP OF CURB, NORTHEAST CORNER OF SPRING MOUNTAIN RD. AND POLARIS AVE. NEAR PC OF SPRING MOUNTAIN RD.	51	0LV11 8SSW6	650.407	F N D CITY OF LAS VEGAS PIN AND PLATE IN TOP OF CURB, NORTHEAST CORNER OF DESERT INN RD. AND POLARIS AVE. (NOT STAMPED) NEAR THE PC OF DESERT INN RD.
39			LOST 2003	52	0LV11 8SWS	655.383	F N D CITY OF LAS VEGAS PIN AND PLATE IN TOP OF CURB, NORTHEAST CORNER OF DESERT INN RD. AND VALLEY VIEW BLVD. NEAR THE PC OF DESERT INN RD. (NOT STAMPED)
40			LOST 2003	53	0LV11 7SSE6	659.622	F N D CITY OF LAS VEGAS PIN AND PLATE IN TOP OF CURB, NORTHEAST CORNER OF DESERT INN RD. AND WYNN RD. NEAR THE PC OF DESERT INN RD. (NOT STAMPED)
41			LOST 2003	54	0LV11 7S4	663.799	F N D CITY OF LAS VEGAS PIN AND PLATE IN TOP OF CURB, NORTHEAST CORNER OF DESERT INN RD. AND ARVILLE ST. NEAR THE PC OF DESERT INN RD. (NOT STAMPED)
42			LOST 2003	55	0LV11 7SWS	675.496	F N D CITY OF LAS VEGAS PIN AND PLATE IN TOP OF CURB, NORTHEAST CORNER OF DECATUR BLVD. AND DESERT INN RD. NEAR THE PC OF DESERT INN RD. (NOT STAMPED)
43	7C11 7SSW6	669.024	F N D RIVET AND SQUARE ALUMINUM PLATE IN TOP OF CURB, NORTHEAST CORNER OF DESERT INN RD. AND CAMERON ST. NEAR THE PC OF DESERT INN RD.	56	0C11 18NWW6 2000	677.615	S E T RIVET AND ROUND ALUMINUM PLATE IN TOP OF CURB, NORTHEAST CORNER OF SPRING MOUNTAIN RD. AND DECATUR BLVD. NEAR THE PC OF DECATUR BLVD.
44			LOST 2003	57	7C11 17SWW6	660.516	F N D RIVET AND SQUARE ALUMINUM PLATE IN TOP OF CURB, NORTHEAST CORNER OF VALLEY VIEW BLVD. AND VIKING RD. NEAR THE PC OF VALLEY VIEW BLVD.
45	7C11 18SWW6	677.678	F N D RIVET AND SQUARE ALUMINUM PLATE IN TOP OF CURB, SOUTHEAST CORNER OF DECATUR BLVD. AND SUPAI DR.	58	7C11 17W4	658.113	F N D RIVET AND SQUARE ALUMINUM PLATE IN TOP OF CURB, NORTHEAST CORNER OF VALLEY VIEW BLVD. AND TWAIN AVE. NEAR THE PC OF VALLEY VIEW BLVD.
46	7C11 9SWW6 1997	637.459	S E T RIVET AND ROUND ALUMINUM PLATE IN TOP OF CURB, NORTHEAST CORNER OF INDUSTRIAL RD. AND STARDUST RD. NEAR THE PC OF INDUSTRIAL RD.	59	7C11 9NW6 1997	630.346	S E T RIVET AND ROUND ALUMINUM PLATE IN TOP OF CURB, NORTHEAST CORNER OF INDUSTRIAL RD. AND CIRCUS-CIRCUS DR. NEAR THE PC OF INDUSTRIAL RD.
47	8C11 16E6 1998	627.978	S E T RIVET AND ROUND ALUMINUM PLATE IN TOP OF CURB, NORTH SIDE OF SANDS AVE. AT MANHATTAN ST. 21 EAST OF THE PI OF MANHATTAN ST.	CLARK COUNTY VERTICAL CONTROL v.2003			
48	8C11 16C4 1998	632.008	S E T RIVET AND ROUND ALUMINUM PLATE IN TOP OF CURB, NORTH SIDE OF SANDS AVE. AT KOVAL LANE.	CLARK COUNTY SURVEYOR'S OFFICE 5051 SOUTH PARADISE ROAD LAS VEGAS, NEVADA 89119 (702) 455-0640			CONVERSION FACTOR: METERS x $\left(\frac{3937}{1200}\right)$ = U.S. SURVEY FEET
			REVISED		09/01/2006	SHEET 3 OF 4	21-61 NW

FOR REFERENCE ONLY

*2018 BENCHMARK NETWORK ADJUSTMENT SUPERSEDES THE 2003 BENCHMARK BOOK

Township 21 South, Range 61 East
Southeast Quarter



NORTH AMERICAN VERTICAL
DATUM OF 1988
- ALL ELEVATIONS IN METERS -

No.	STATION	ELEVATION (METERS)	DESCRIPTION
1	6C11 24SSE6	598.814	F N D RIVET AND SQUARE ALUMINUM PLATE IN TOP OF CURB, NORTHEAST CORNER OF TROPICANA AVE. AND MOJAVE RD. NEAR THE PC OF TROPICANA AVE.
2	6C11 24S4	599.561	F N D RIVET AND SQUARE ALUMINUM PLATE IN TOP OF CURB, NORTHEAST CORNER OF TROPICANA AVE. AND McLEOD DR. NEAR THE PC OF TROPICANA AVE.
3	6C11 24SSW6	602.050	F N D RIVET AND SQUARE ALUMINUM PLATE IN TOP OF CURB, NORTHEAST CORNER OF TROPICANA AVE. AND TOPAZ ST. NEAR THE PC OF TROPICANA AVE.
4	6C11 24SWS	601.889	F N D RIVET AND SQUARE ALUMINUM PLATE IN TOP OF CURB, NORTHEAST CORNER OF TROPICANA AVE. AND EASTERN AVE. NEAR THE PC OF TROPICANA AVE.
5	6C11 23SSE6	606.004	F N D RIVET AND SQUARE ALUMINUM PLATE IN TOP OF CURB, NORTHEAST CORNER OF TROPICANA AVE. AND BURNHAM AVE. NEAR THE PC OF TROPICANA AVE.
6	6C11 23S4	608.631	F N D RIVET AND SQUARE ALUMINUM PLATE IN TOP OF CURB, NORTHEAST CORNER OF TROPICANA AVE. AND SPENCER ST. NEAR THE PC OF TROPICANA AVE.
7	6C11 23SSW6	611.761	F N D RIVET AND SQUARE ALUMINUM PLATE IN TOP OF CURB, NORTHEAST CORNER OF TROPICANA AVE. AND TAMARUS ST. IN FRONT OF A LIGHT POLE.
8			LOST 2003
9			LOST 2003
10			LOST 2003
11			LOST 2003

CLARK COUNTY VERTICAL CONTROL v.2003

CLARK COUNTY SURVEYOR'S OFFICE
5051 SOUTH PARADISE ROAD
LAS VEGAS, NEVADA 89119
(702) 455-0640

CONVERSION FACTOR:
METERS X $\left(\frac{3937}{1200}\right)$ = U.S. SURVEY FEET

REVISED 09/01/2006	SHEET 1 OF 4	21-61 SE
-----------------------	-----------------	-------------

FOR REFERENCE ONLY

***2018 BENCHMARK NETWORK ADJUSTMENT SUPERSEDES THE 2003 BENCHMARK BOOK**

No.	STATION	ELEVATION (METERS)	DESCRIPTION	No.	STATION	ELEVATION (METERS)	DESCRIPTION
12			LOST 2003	25			LOST 2003
13			LOST 2003	26			LOST 2003
14			LOST 2003	27	6C11 23W4	612.913	F N D RIVET AND SQUARE ALUMINUM PLATE IN TOP OF CURB, NORTHEAST CORNER OF MARYLAND PKWY. AND HARMON AVE. NEAR THE PC OF MARYLAND PKWY.
15	6C11 22NWW6	624.519	F N D RIVET AND SQUARE ALUMINUM PLATE IN TOP OF CURB, EAST SIDE OF PARADISE RD. AT FLAMINGO WASH BOX, JUST NORTH OF SOUTH DRIVEWAY INTO COBBLESTONE CREEK APTS. 4200 PARADISE RD.	28	6C11 23NWW6	612.434	F N D RIVET AND SQUARE ALUMINUM PLATE IN TOP OF CURB, NORTHEAST CORNER OF MARYLAND PKWY. AND ROCHELLE AVE. NEAR THE PC OF MARYLAND PKWY.
16	6C11 22NWS	624.806	F N D RIVET AND SQUARE ALUMINUM PLATE IN TOP OF CURB, NORTHEAST CORNER OF PARADISE RD. AND FLAMINGO RD. NEAR THE PC OF PARADISE RD.	29	7C11 36SWW6	617.456	F N D RIVET AND SQUARE ALUMINUM PLATE IN TOP OF CURB, NORTHEAST CORNER OF EASTERN AVE. AND CHANDLER AVE. NEAR THE PC OF EASTERN AVE.
17			LOST 2003	30	7C11 36W4	615.404	F N D RIVET AND SQUARE ALUMINUM PLATE IN TOP OF CURB, NORTHEAST CORNER OF EASTERN AVE. AND PATRICK LN. NEAR THE PC OF EASTERN AVE.
18			LOST 2003	31			LOST 2003
19	6C11 24NWW6	596.004	F N D RIVET AND SQUARE ALUMINUM PLATE IN TOP OF CURB, NORTHEAST CORNER OF EASTERN AVE. AND ROCHELLE AVE. NEAR THE PC OF EASTERN AVE.	32			LOST 2003
20			LOST 2003	33	7C11 26SEE6	612.773	F N D RIVET AND SQUARE ALUMINUM PLATE IN TOP OF CURB, NORTHWEST CORNER OF EASTERN AVE. AND RAWHIDE ST. NEAR THE PC OF EASTERN AVE.
21	6C11 36SSE6	600.761	F N D RIVET AND SQUARE ALUMINUM PLATE IN TOP OF CURB, NORTHEAST CORNER OF SUNSET RD. AND TOMIYASU LN. NEAR A METAL STREET LIGHT POLE.	34	7C11 25W4	609.438	F N D RIVET AND SQUARE ALUMINUM PLATE IN TOP OF CURB, NORTHEAST CORNER OF EASTERN AVE. AND HACIENDA AVE. NEAR THE PC OF EASTERN AVE.
22	6C11 36S4	608.274	F N D RIVET AND SQUARE ALUMINUM PLATE IN TOP OF CURB, NORTHEAST CORNER OF SUNSET RD. AND EXIT ROAD FOR SUNSET PARK.	35	7C11 25NWW6	604.678	F N D RIVET AND SQUARE ALUMINUM PLATE IN TOP OF CURB, NORTHEAST CORNER OF EASTERN AVE. AND RENO AVE. NEAR THE PC OF EASTERN AVE.
23	6C11 36SSW6	610.226	F N D RIVET AND SQUARE ALUMINUM PLATE IN TOP OF CURB, NORTHEAST CORNER OF SUNSET RD. AND McLEOD DR. NEAR THE PC OF SUNSET RD.	CLARK COUNTY VERTICAL CONTROL v.2003			
24			LOST 2003	CLARK COUNTY SURVEYOR'S OFFICE 5051 SOUTH PARADISE ROAD LAS VEGAS, NEVADA 89119 (702) 455-0640		CONVERSION FACTOR: METERS X $\left(\frac{3937}{1200}\right)$ = U.S. SURVEY FEET	
				REVISED 2003		SHEET 2 OF 4	21-61 SE

FOR REFERENCE ONLY

***2018 BENCHMARK NETWORK ADJUSTMENT SUPERSEDES THE 2003 BENCHMARK BOOK**

No.	STATION	ELEVATION (METERS)	DESCRIPTION	No.	STATION	ELEVATION (METERS)	DESCRIPTION
36	7C11 25NW6	607.077	F N D RIVET AND SQUARE ALUMINUM PLATE IN TOP OF CURB, NORTHWEST CORNER OF TOPAZ ST. AND RENO AVE. NEAR THE PC OF TOPAZ ST.	49			LOST 2006
37	7C11 25W6	606.047	F N D RIVET AND SQUARE ALUMINUM PLATE IN TOP OF CURB, SOUTHEAST CORNER OF HACIENDA AVE. AND HARRISON DR. JUST WEST OF THE WEST DRIVEWAY GOING INTO 2825 HACIENDA AVE.	50			LOST 2006
38	7C11 25SSE6	601.330	F N D RIVET AND SQUARE ALUMINUM PLATE IN TOP OF CURB, NORTHWEST CORNER OF RUSSELL RD. AND MOJAVE RD. NEAR THE PC OF RUSSELL RD.	51			LOST 2006
39			LOST 2003	52	7C11 36E6 1997	596.407	S E T RIVET AND ROUND ALUMINUM PLATE IN TOP OF CURB, SOUTH SIDE OF PATRICK LN. IN FRONT OF A METAL LIGHT POLE NEAR THE WEST DRIVEWAY OF 3245 PATRICK LN.
40			LOST 2003	53	8C11 23SWS 1998	615.729	S E T RIVET AND ROUND ALUMINUM PLATE IN TOP OF CURB, NORTHEAST CORNER OF TROPICANA AVE. AND MARYLAND PKWY. NEAR THE PC OF TROPICANA AVE.
41	7C11 26SSE6	615.915	F N D RIVET AND SQUARE ALUMINUM PLATE IN TOP OF CURB, NORTHEAST CORNER OF RUSSELL RD. AND BURNHAM AVE. IN FRONT OF 2120 RUSSELL RD.	54	8C11 22SSE6 1998	620.261	S E T RIVET AND ROUND ALUMINUM PLATE IN TOP OF CURB, NORTHEAST CORNER OF TROPICANA AVE. AND WILBUR ST.-THOMAS & MACK DR. IN A PORK CHOP ISLAND.
42	7C11 26S4	617.494	F N D RIVET AND SQUARE ALUMINUM PLATE IN TOP OF CURB, NORTHEAST CORNER OF RUSSELL RD. AND SPENCER ST. NEAR THE PC OF RUSSELL RD.	55	8C11 22S4 1998	623.676	S E T RIVET AND ROUND ALUMINUM PLATE IN TOP OF CURB, NORTHEAST CORNER OF TROPICANA AVE. AND SWENSON ST. NEAR THE PC OF TROPICANA AVE.
43			LOST 2003	56	8C11 22SSW6 1998	627.589	S E T RIVET AND ROUND ALUMINUM PLATE IN TOP OF CURB, NORTHEAST CORNER OF TROPICANA AVE. AND PARADISE RD. NEAR THE PC OF TROPICANA AVE.
44			LOST 2003	57	8C11 22SW6 1998	625.911	S E T RIVET AND ROUND ALUMINUM PLATE IN TOP OF CURB, NORTHEAST CORNER OF PARADISE RD. AND NAPLES DR. NEAR THE PC OF PARADISE RD.
45			LOST 2003	58	8C11 22W6 1998	625.835	S E T RIVET AND ROUND ALUMINUM PLATE IN TOP OF CURB, NORTHEAST CORNER OF PARADISE RD. AND HARMON AVE. NEAR THE PC OF PARADISE RD.
46			LOST 2003	59	8C11 24W4 1998	596.261	S E T RIVET AND ROUND ALUMINUM PLATE IN TOP OF CURB, NORTHEAST CORNER OF EASTERN AVE. AND HARMON AVE. NEAR THE PC OF EASTERN AVE.
47			LOST 2003	CLARK COUNTY VERTICAL CONTROL v.2003			
48			LOST 2003	CLARK COUNTY SURVEYOR'S OFFICE 5051 SOUTH PARADISE ROAD LAS VEGAS, NEVADA 89119 (702) 455-0640			CONVERSION FACTOR: METERS X $\left(\frac{3937}{1200}\right)$ = U.S. SURVEY FEET
				REVISED 09/01/2006	SHEET 3 OF 4	21-61 SE	

FOR REFERENCE ONLY

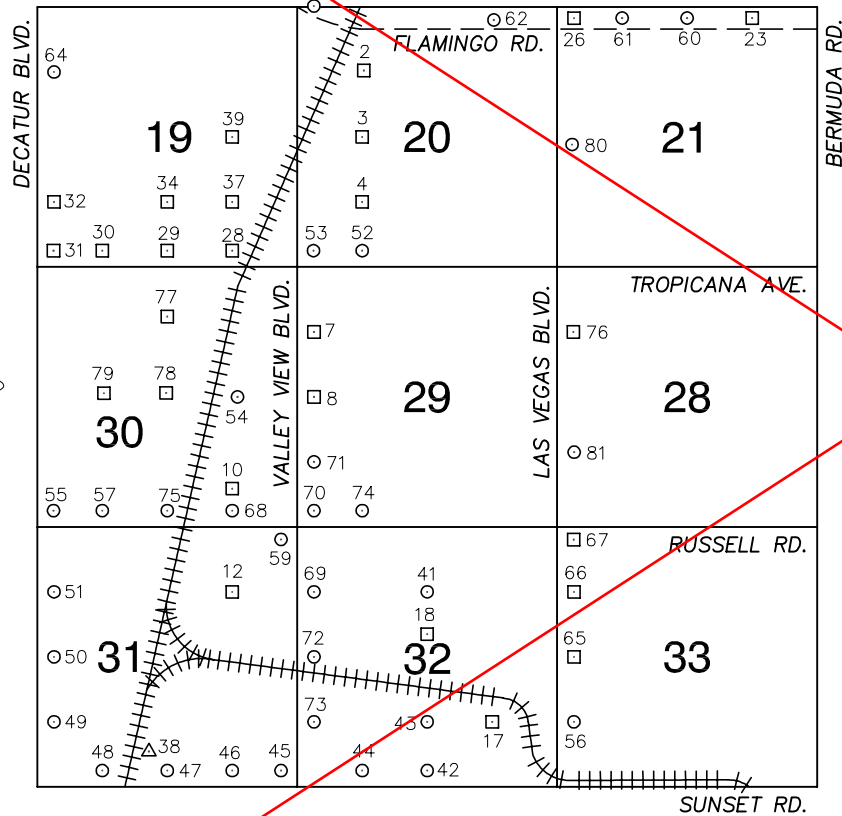
***2018 BENCHMARK NETWORK ADJUSTMENT SUPERSEDES THE 2003 BENCHMARK BOOK**

No.	STATION	ELEVATION (METERS)	DESCRIPTION	No.	STATION	ELEVATION (METERS)	DESCRIPTION
60	8C11 36NWW6 1998	613.363	S E T RIVET AND ROUND ALUMINUM PLATE IN TOP OF CURB, NORTHEAST CORNER OF EASTERN AVE. AND OQUENDO RD. NEAR THE PC OF EASTERN AVE.	73			
61	8C11 25SWS 1998	611.619	S E T RIVET AND ROUND ALUMINUM PLATE IN TOP OF CURB, NORTHEAST CORNER OF EASTERN AVE. AND RUSSELL RD. NEAR THE PC OF EASTERN AVE.	74			
62	0C11 23SWW6 2000	613.941	S E T RIVET AND ROUND ALUMINUM PLATE IN TOP OF CURB, NORTHEAST CORNER OF MARYLAND PKWY. AND DEL MAR ST. NEAR THE PC OF MARYLAND PKWY.	75			
63	0C11 24SWW6 2000	600.180	S E T RIVET AND ROUND ALUMINUM PLATE IN TOP OF CURB, NORTHEAST CORNER OF EASTERN AVE. AND TOMPKINS AVE. NEAR THE PC OF EASTERN AVE.	76			
64	0C11 25S4 2000	607.099	S E T RIVET AND ROUND ALUMINUM PLATE IN TOP OF CURB, NORTHWEST CORNER OF RUSSELL RD. AND McLEOD RD. NEAR THE PC OF McLEOD RD.	77			
65	8C11 25SSW6 2000	607.440	S E T RIVET AND ROUND ALUMINUM PLATE IN TOP OF CURB, NORTHEAST CORNER OF RUSSELL RD. AND TOPAZ ST. NEAR THE PC OF RUSSELL RD.	78			
66	0C11 26SSW6 2000	620.411	S E T RIVET AND ROUND ALUMINUM PLATE IN TOP OF CURB, NORTHEAST CORNER OF RUSSELL RD. AND TAMARUS ST. NEAR THE PC OF RUSSELL RD.	79			
67	0C11 26SWS 2000	624.581	S E T RIVET AND ROUND ALUMINUM PLATE IN TOP OF CURB, NORTHEAST CORNER OF RUSSELL RD. AND MARYLAND PKWY. NEAR THE PC OF RUSSELL RD.	80			
68	0C11 26SWW6 2000	621.543	S E T RIVET AND ROUND ALUMINUM PLATE IN TOP OF CURB, NORTHEAST CORNER OF MARYLAND PKWY. AND RAWHIDE ST. NEAR THE PC OF MARYLAND PKWY.	81			
69	0C11 26W4 2000	619.436	S E T RIVET AND ROUND ALUMINUM PLATE IN TOP OF CURB, NORTHEAST CORNER OF MARYLAND PKWY. AND HACIENDA AVE. NEAR THE PC OF MARYLAND PKWY.	82			
70	0C11 26NWW6 2000	617.275	S E T RIVET AND ROUND ALUMINUM PLATE IN TOP OF CURB, NORTHEAST CORNER OF MARYLAND PKWY. AND RENO AVE. NEAR THE PC OF MARYLAND PKWY.	83			
71				CLARK COUNTY VERTICAL CONTROL v.2003			
72				CLARK COUNTY SURVEYOR'S OFFICE 5051 SOUTH PARADISE ROAD LAS VEGAS, NEVADA 89119 (702) 455-0640		CONVERSION FACTOR: METERS X $\left(\frac{3937}{1200}\right)$ = U.S. SURVEY FEET	
				REVISED 2003	SHEET 4 OF 4	21-61 SE	

FOR REFERENCE ONLY

*2018 BENCHMARK NETWORK ADJUSTMENT SUPERSEDES THE 2003 BENCHMARK BOOK

Township 21 South, Range 61 East
Southwest Quarter



NORTH AMERICAN VERTICAL
DATUM OF 1988
- ALL ELEVATIONS IN METERS -

No.	STATION	ELEVATION (METERS)	DESCRIPTION
1			LOST 1992
2	6C11 20NW6	653.563	F N D RIVET AND SQUARE ALUMINUM PLATE IN TOP OF CURB, WEST SIDE OF POLARIS AVE. ± 1320 FEET NORTH OF HARMON AVE, IN FRONT OF 4285 POLARIS AVE.
3	6C11 20W6	654.323	F N D RIVET AND SQUARE ALUMINUM PLATE IN TOP OF CURB, SOUTHEAST CORNER OF POLARIS AVE. AND HARMON AVE. NEAR PC OF HARMON AVE.
4	6C11 20SW6	659.200	F N D RIVET AND SQUARE ALUMINUM PLATE IN TOP OF CURB, NORTHEAST CORNER OF POLARIS AVE. AND TOMPKINS AVE. NEAR THE PC OF POLARIS AVE.
5			LOST 2003
6			LOST 2003
7	6C11 29NWW6	668.497	F N D RIVET AND SQUARE ALUMINUM PLATE IN TOP OF CURB, SOUTHEAST CORNER OF VALLEY VIEW BLVD. AND RENO AVE. NEAR THE PC OF VALLEY VIEW BLVD.
8	6C11 29W4	670.697	F N D RIVET AND SQUARE ALUMINUM PLATE IN TOP OF CURB, NORTHEAST CORNER OF HACIENDA AVE. AND VALLEY VIEW BLVD. NEAR THE PC OF VALLEY VIEW BLVD.
9			LOST 2003
10	6C11 30SE6	680.714	F N D RIVET AND ROUND ALUMINUM PLATE IN TOP OF CURB, NORTHEAST CORNER OF WYNN RD. AND DEWEY DR. NEAR THE PC OF WYNN RD.
11			LOST 2003

CLARK COUNTY VERTICAL CONTROL v.2003

CLARK COUNTY SURVEYOR'S OFFICE
5051 SOUTH PARADISE ROAD
LAS VEGAS, NEVADA 89119
(702) 455-0640

CONVERSION FACTOR:
METERS X $\left(\frac{3937}{1200}\right)$ = U.S. SURVEY FEET

REVISED
09/01/2006

SHEET
1 OF 4

21-61
SW

FOR REFERENCE ONLY

***2018 BENCHMARK NETWORK ADJUSTMENT SUPERSEDES THE 2003 BENCHMARK BOOK**

No.	STATION	ELEVATION (METERS)	DESCRIPTION	No.	STATION	ELEVATION (METERS)	DESCRIPTION
12	6C11 31NE6	684.822	F N D RIVET AND SQUARE ALUMINUM PLATE IN TOP OF CURB, NORTHEAST CORNER OF WYNN RD. AND OQUENDO RD. NEAR THE PC OF WYNN RD.	25			LOST 2003
13			LOST 2003	26	7C11 21NWS	641.993	F N D RIVET AND SQUARE ALUMINUM PLATE IN TOP OF CURB, NORTHEAST CORNER OF FLAMINGO RD. AND LAS VEGAS BLVD. NEAR THE PC OF FLAMINGO RD.
14			LOST 2003	27			LOST 2003
15			LOST 2003	28	7C11 19SSE6	670.803	F N D RIVET AND SQUARE ALUMINUM PLATE IN TOP OF CURB, NORTHWEST CORNER OF TROPICANA AVE. AND WYNN RD. NEAR THE PC OF WYNN RD.
16			LOST 2003	29	7C11 19S4	675.991	F N D RIVET AND SQUARE ALUMINUM PLATE IN TOP OF CURB, NORTHEAST CORNER OF TROPICANA AVE AND ARVILLE ST. NEAR THE PC OF ARVILLE ST.
17	6C11 32SE6	672.178	F N D RIVET AND SQUARE ALUMINUM PLATE IN TOP OF CURB, SOUTHWEST CORNER OF POST RD. AND WINDY RD. NEAR THE PC OF POST RD.	30	7C11 19SSW6	683.310	F N D RIVET AND SQUARE ALUMINUM PLATE IN TOP OF CURB, NORTHWEST CORNER OF TROPICANA AVE. AND CAMERON ST. NEAR THE PC OF TROPICANA AVE.
18	6C11 32C4	677.177	F N D RIVET AND SQUARE ALUMINUM PLATE IN NORTHWEST CORNER OF RAILROAD BRIDGE CROSSING OVER FREEWAY, 90' EAST OF INDUSTRIAL RD. 7' NORTH OF TRACKS IN CONCRETE ABUTMENT.	31	7C11 19SWS	685.056	F N D RIVET AND SQUARE ALUMINUM PLATE IN TOP OF CURB, NORTHEAST CORNER OF TROPICANA AVE. AND DECATUR BLVD. NEAR THE PC OF TROPICANA AVE.
19			LOST 2003	32	7C11 19SWW6	687.374	F N D RIVET AND SQUARE ALUMINUM PLATE IN TOP OF CURB, EAST SIDE OF DECATUR BLVD. 1300' NORTH OF TROPICANA AVE. IN FRONT OF 4660 DECATUR BLVD.
20			LOST 2003	33			LOST 2003
21			LOST 2003	34	8C11 19S6	673.468	F N D RIVET AND SQUARE ALUMINUM PLATE IN TOP OF CURB, NORTHEAST CORNER OF ARVILLE ST. AND TOMPKINS AVE. NEAR THE PC OF ARVILLE ST.
22			LOST 2003	35			LOST 2003
23	7C11 21NNE6	629.679	F N D RIVET AND SQUARE ALUMINUM PLATE IN TOP OF CURB, NORTHEAST CORNER OF FLAMINGO RD. AND FREDDA ST. NEAR WHAT WOULD BE THE PC OF FLAMINGO RD.	CLARK COUNTY VERTICAL CONTROL v.2003			
24			LOST 2003	CLARK COUNTY SURVEYOR'S OFFICE 5051 SOUTH PARADISE ROAD LAS VEGAS, NEVADA 89119 (702) 455-0640			CONVERSION FACTOR: METERS X $\left(\frac{3937}{1200}\right)$ = U.S. SURVEY FEET
				REVISED 08/01/2003		SHEET 2 OF 4	21-61 SW

FOR REFERENCE ONLY

***2018 BENCHMARK NETWORK ADJUSTMENT SUPERSEDES THE 2003 BENCHMARK BOOK**

No.	STATION	ELEVATION (METERS)	DESCRIPTION	No.	STATION	ELEVATION (METERS)	DESCRIPTION
36			LOST 2003	49	7C11 31SWW6 1997	705.375	S E T RIVET AND ROUND ALUMINUM PLATE IN A CONCRETE MONUMENT, NORTHEAST QUADRANT OF DECATUR BLVD. AND POST RD. 70' EAST OF DECATUR BLVD. AND 45' NORTH OF POST RD.
37	7C11 19SE6	666.837	F N D RIVET AND SQUARE ALUMINUM PLATE IN TOP OF CURB, SOUTHEAST CORNER OF TOMPKINS AVE. AND WYNN RD. NEAR THE PC OF WYNN RD.	50	7C11 31W4 1997	702.776	S E T RIVET AND ROUND ALUMINUM PLATE IN A CONCRETE MONUMENT, NORTHEAST QUADRANT OF DECATUR BLVD. AND PATRICK LN. 70' EAST OF DECATUR BLVD. AND 40' NORTH OF PATRICK LN.
38	R 366 1963	702.379	F N D 4" USGS BRASS CAP IN THE TOP OF A HEADWALL, EAST SIDE OF RR TRACKS AND NORTH OF PROJECTION OF SUNSET RD., STAMPED "R366 1963".	51	7C11 31NWW6 1997	700.091	S E T RIVET AND ROUND ALUMINUM PLATE IN A CONCRETE MONUMENT, SOUTHEAST QUADRANT OF DECATUR BLVD. AND OQUENDO RD. 45' SOUTH OF OQUENDO RD. AND 70' EAST OF DECATUR BLVD.
39	7C11 19E6	664.180	F N D RIVET AND SQUARE ALUMINUM PLATE IN TOP OF CURB, NORTHEAST CORNER OF WYNN RD. AND HARMON AVE., EAST OF THE WESTERLY DRIVEWAY GOING INTO 4050 HARMON AVE.	52	7C11 20SSW6 1997	660.597	S E T RIVET AND ROUND ALUMINUM PLATE IN TOP OF CURB, NORTHEAST CORNER OF TROPICANA AVE. AND POLARIS AVE. 10' NORTH OF THE PC OF POLARIS AVE.
40			LOST 2003	53	7C11 20SWS 1997	663.898	S E T RIVET AND ROUND ALUMINUM PLATE IN TOP OF CURB, NORTHEAST CORNER OF TROPICANA AVE. AND VALLEY VIEW BLVD. NEAR THE PT OF VALLEY VIEW BLVD.
41	7C11 32N6 1997	673.385	S E T RIVET AND ROUND ALUMINUM PLATE IN TOP OF CURB, SOUTHEAST CORNER OF INDUSTRIAL RD. AND OQUENDO RD.	54	7C11 30E6 1997	676.621	S E T RIVET AND ROUND ALUMINUM PLATE IN TOP OF CURB, SOUTHEAST CORNER OF HACIENDA AVE. AND WYNN RD., NEAR THE PC OF WYNN RD.
42	7C11 32S4 1997	681.069	S E T RIVET AND ROUND ALUMINUM PLATE IN TOP OF CURB, NORTHWEST CORNER OF INDUSTRIAL RD. AND SUNSET RD. NEAR THE PC OF INDUSTRIAL RD.	55	7C11 30SWS 1997	696.408	F N D RIVET AND ROUND ALUMINUM PLATE IN TOP OF CURB, NORTHEAST CORNER OF RUSSELL RD. AND DECATUR BLVD. APPROXIMATELY 20' EAST OF END OF CURB AND GUTTER.
43	7C11 32S6 1997	679.023	S E T RIVET AND ROUND ALUMINUM PLATE IN TOP OF CURB, SOUTHWEST CORNER OF INDUSTRIAL RD AND POST RD. NEAR THE PC OF INDUSTRIAL RD.	56	7C11 33SWW6 1997	668.267	S E T RIVET AND ROUND ALUMINUM PLATE IN TOP OF CURB, NORTHEAST CORNER OF LAS VEGAS BLVD. AND POST RD. 100' NORTH OF CENTERLINE.
44	7C11 32SSW6 1997	684.641	S E T RIVET AND ROUND ALUMINUM PLATE IN TOP OF CURB, NORTHWEST CORNER OF SUNSET RD. AND POLARIS AVE. NEAR THE PC OF SUNSET RD.	57	4C11 30SSW6	694.134	F N D RIVET AND SQUARE ALUMINUM PLATE IN TOP OF CURB, NORTHWEST CORNER OF RUSSELL RD. AND CAMERON ST. NORTH OF THE PC OF CAMERON ST.
45	7C11 31SES 1997	689.797	S E T RIVET AND ROUND ALUMINUM PLATE IN TOP OF CURB, NORTHWEST CORNER OF SUNSET RD. AND VALLEY VIEW BLVD. NEAR THE PC OF SUNSET RD.	58			LOST 2003
46	7C11 31SSE6 1997	695.996	S E T RIVET AND ROUND ALUMINUM PLATE IN TOP OF CURB, NORTHEAST CORNER OF SUNSET RD. AND HINSON ST. NEAR THE PC OF SUNSET RD.	59	4C11 31NES	678.402	F N D 2" DOME BRASS CAP IN TOP OF CURB, SOUTHWEST CORNER OF RUSSELL RD. AND VALLEY VIEW BLVD. NEAR THE PC OF VALLEY VIEW BLVD.
47	7C11 31S4 1997	698.908	S E T RIVET AND ROUND ALUMINUM PLATE IN AN ELECTRICAL TRANSFORMER PAD. 35' NORTH OF SUNSET RD AND 110' EAST OF ARVILLE ST.	CLARK COUNTY VERTICAL CONTROL v.2003			
48	8C11 31SSW6	705.568	F N D 2" BRASS CAP IN A CONCRETE MONUMENT, NORTHWEST CORNER OF SUNSET RD. AND CAMERON ST.	CLARK COUNTY SURVEYOR'S OFFICE 5051 SOUTH PARADISE ROAD LAS VEGAS, NEVADA 89119 (702) 455-0640			CONVERSION FACTOR: METERS X $\left(\frac{3937}{1200}\right)$ = U.S. SURVEY FEET
			REVISED 08/01/2003	SHEET 3 OF 4	21-61 SW		

FOR REFERENCE ONLY

***2018 BENCHMARK NETWORK ADJUSTMENT SUPERSEDES THE 2003 BENCHMARK BOOK**

No.	STATION	ELEVATION (METERS)	DESCRIPTION	No.	STATION	ELEVATION (METERS)	DESCRIPTION
60	0C11 21N4 2000	632.742	S E T RIVET AND ROUND ALUMINUM PLATE IN TOP OF CURB, NORTHEAST CORNER OF FLAMINGO RD. AND KOVAL LN. NEAR THE PC OF FLAMINGO RD.	73	0C11 32SWW6 2000	685.505	S E T RIVET AND ROUND ALUMINUM PLATE IN TOP OF CURB, NORTHEAST CORNER OF VALLEY VIEW BLVD. AND POST RD. NEAR THE PC OF VALLEY VIEW BLVD.
61	0C11 21NNW6 2000	636.461	S E T RIVET AND ROUND ALUMINUM PLATE IN TOP OF CURB, NORTHEAST CORNER OF FLAMINGO RD. AND AUDRIE ST. NEAR THE PC OF FLAMINGO RD.	74	0C11 29SSW6 2000	674.147	S E T RIVET AND ROUND ALUMINUM PLATE IN TOP OF CURB, NORTHEAST CORNER OF RUSSELL RD. AND POLARIS AVE. NEAR THE PC OF RUSSELL RD.
62	0C11 20NNE6 2000	645.710	S E T RIVET AND ROUND ALUMINUM PLATE IN POWER POLE BASE ON THE NORTH SIDE OF FLAMINGO RD. AT THE ENTRANCE TO I-15	75	0C11 30S4 2000	684.578	S E T RIVET AND ROUND ALUMINUM PLATE IN TOP OF CURB, NORTHEAST CORNER OF RUSSELL RD. AND ARVILLE ST. NEAR THE PC OF RUSSELL RD.
63	0C11 20NWS 2000	656.086	S E T RIVET AND ROUND ALUMINUM PLATE IN TOP OF CURB, NORTHEAST CORNER OF FLAMINGO RD AND VALLEY VIEW BLVD. NEAR THE PC OF FLAMINGO RD.	76	4C11 28NWW6	650.667	F N D RIVET AND SQUARE ALUMINUM PLATE IN TOP OF CURB, NORTHEAST CORNER OF RENO AVE. AND LAS VEGAS BLVD. NEAR THE PT OF LAS VEGAS BLVD.
64	0C11 19NWW6 2000	680.651	S E T RIVET AND ROUND ALUMINUM PLATE IN TOP OF CURB, NORTHEAST CORNER OF DECATUR BLVD. AND ROCHELLE AVE. NEAR THE PC OF DECATUR BLVD.	77	9C11 30N6	678.126	F N D RIVET AND SQUARE ALUMINUM PLATE IN TOP OF CURB, NORTHWEST CORNER OF ARVILLE ST. AND RENO AVE. NEAR THE PC OF ARVILLE ST.
65	4C11 33W4	664.411	F N D RIVET AND SQUARE ALUMINUM PLATE IN TOP OF ISLAND NOSE, EAST SIDE OF LAS VEGAS BLVD. AT THE ENTRANCE TO McCARRAN AIRPORT.	78	9C11 30C4	682.033	F N D RIVET AND SQUARE ALUMINUM PLATE IN TOP OF CURB, SOUTHWEST CORNER OF ARVILLE ST. AND HACIENDA AVE. NEAR THE PC OF HACIENDA AVE.
66	4C11 33NWW6	662.310	F N D RIVET AND SQUARE ALUMINUM PLATE IN TOP OF CURB, EAST SIDE OF LAS VEGAS BLVD. AT 5195 LAS VEGAS BLVD. SO. 3' WEST OF A FIRE HYDRANT.	79	9C11 30W6	684.424	F N D RIVET AND SQUARE ALUMINUM PLATE IN TOP OF CURB, SOUTHWEST CORNER OF HACIENDA AVE. AND CAMERON ST. NEAR THE PT OF HACIENDA AVE.
67	4C11 33NWS	658.763	F N D RIVET AND SQUARE ALUMINUM PLATE IN TOP OF CURB, EAST SIDE OF LAS VEGAS BLVD. 150' SOUTH OF RUSSELL RD.	80	5C11 21W4	645.098	S E T RIVET AND ROUND ALUMINUM PLATE IN TOP OF CURB, SOUTH EAST CORNER OF LAS VEGAS BLVD. AND HARMON AVE. NEAR THE PC OF LAS VEGAS BLVD.
68	0C11 30SSE6 2000	680.796	S E T RIVET AND ROUND ALUMINUM PLATE IN TOP OF CURB, NORTHEAST CORNER OF RUSSELL RD. AND WYNN RD. NEAR THE PC OF RUSSELL RD.	81	5C11 28SWW6	652.692	S E T RIVET AND ROUND ALUMINUM PLATE IN TOP OF CURB, EAST SIDE OF LAS VEGAS BLVD. IN FRONT OF 3951 LAS VEGAS BLVD. (MANDALEY BAY HOTEL), ± 1600' NORTH OF RUSSELL RD.
69	0C11 32NWW6 2000	680.082	S E T RIVET AND ROUND ALUMINUM PLATE IN TOP OF CURB, NORTHEAST CORNER OF VALLEY VIEW BLVD. AND OQUENDO RD. NEAR THE PC OF VALLEY VIEW BLVD.	82			
70	0C11 29SWS 2000	678.032	S E T RIVET AND ROUND ALUMINUM PLATE IN TOP OF CURB, NORTHEAST CORNER OF VALLEY VIEW BLVD. AND RUSSELL RD. NEAR THE PC OF RUSSELL RD.	83			
71	0C11 29SWW6 2000	676.978	S E T RIVET AND ROUND ALUMINUM PLATE IN TOP OF CURB, NORTHEAST CORNER OF VALLEY VIEW BLVD. AND DIABLO DR. NEAR THE PC OF VALLEY VIEW BLVD.	CLARK COUNTY VERTICAL CONTROL v.2003			
72	0C11 32W4 2000	684.406	S E T RIVET AND ROUND ALUMINUM PLATE IN TOP OF CURB, EAST SIDE OF VALLEY VIEW BLVD. 75' NORTH OF THE RAILROAD CROSSING.	CLARK COUNTY SURVEYOR'S OFFICE 5051 SOUTH PARADISE ROAD LAS VEGAS, NEVADA 89119 (702) 455-0640		CONVERSION FACTOR: METERS X $\left(\frac{3937}{1200}\right)$ = U.S. SURVEY FEET	
				REVISED 09/01/2006		SHEET 4 OF 4	
						21-61 SW	